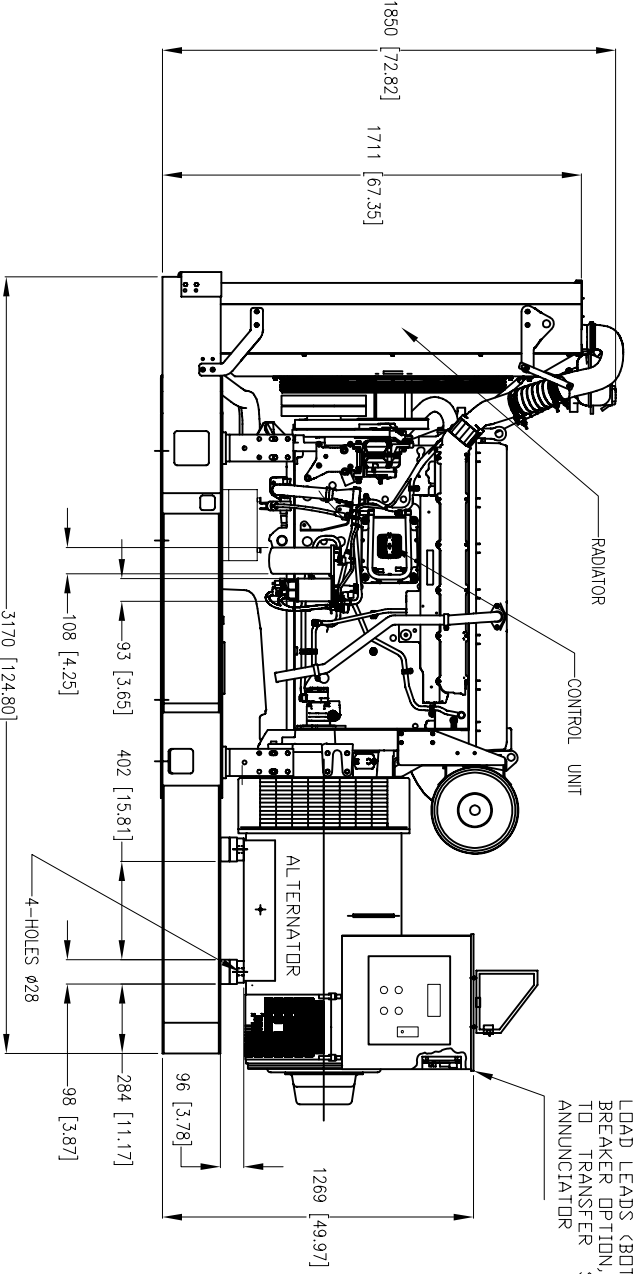
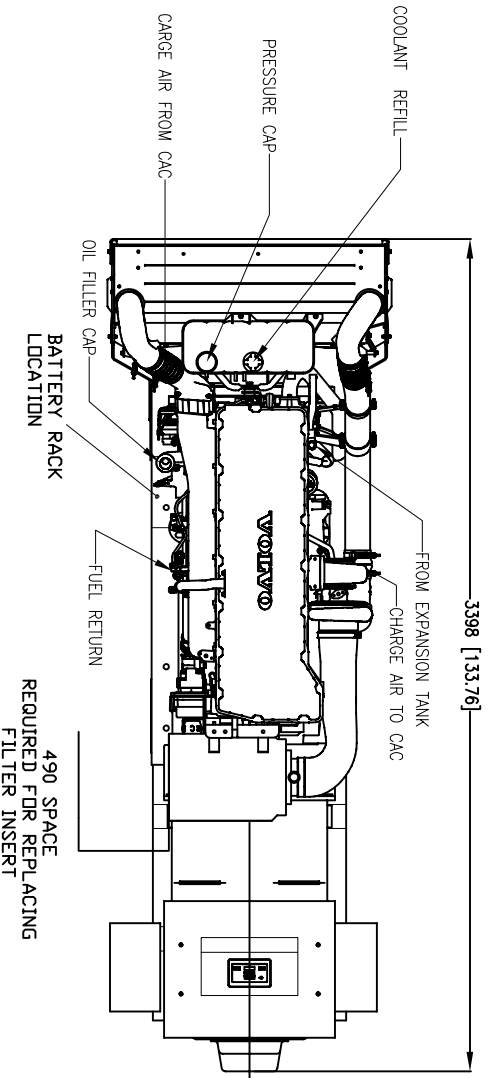
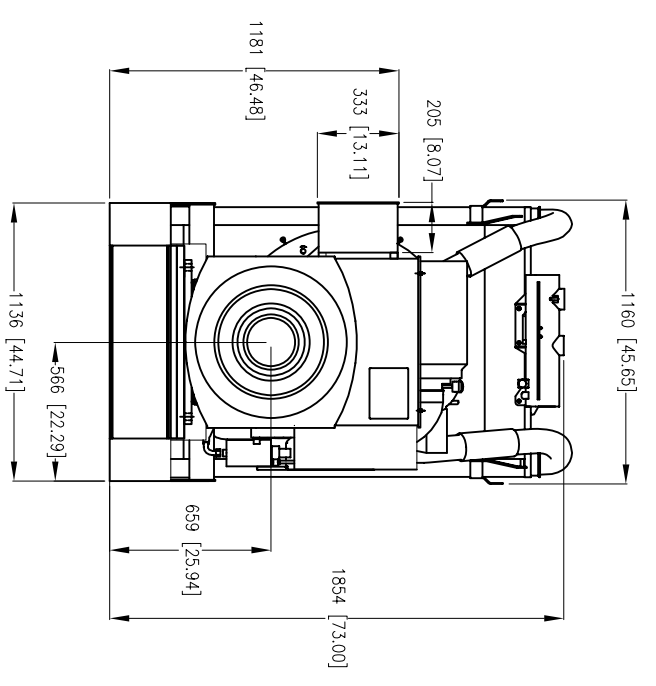
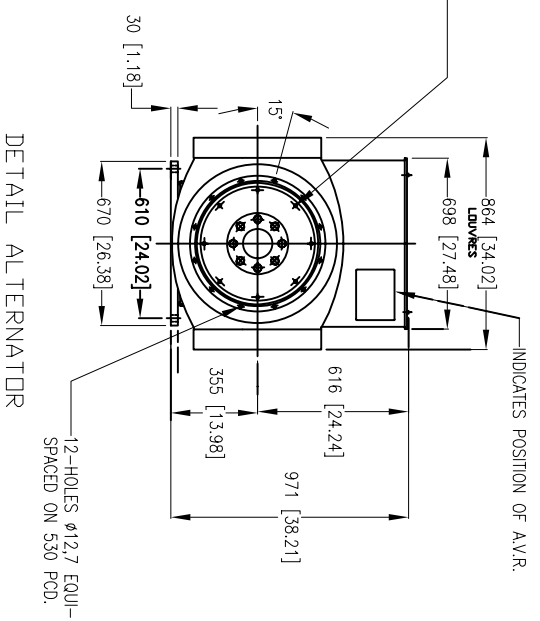


1 2 3 4 5 6 7 8 9 10 11 12



CONDUIT ENTRY AREA FOR ALTERNATOR LEAD LEADS (BOTTOM ENTRY), CIRCUIT BREAKER OPTION, REMOTE CONNECTION TO TRANSFER SWITCH AND REMOTE ANNUNCIATOR



NOTES

GENERAL DIMENSIONS SUGGESTED BY MAQUINARIA IGSA CAN BE MODIFIED IN FIELD ACCORDING TO INSTALLATION.

POWER GENERATOR'S SILENCER IS PROVIDED SEPARATELY. ITS LOCATION AND DIRECTION CAN BE ADJUSTED IN SITE ACCORDING TO THE NEEDS OF INSTALLATION.

DIAMETER OF SILENCER BODY IS 8" AND LENGTH 77"

DIAMETER OF FLEXIBLE TUBE FOR SILENCER IS 8"

NOTE: DIMENSIONS IN [] ARE INCH

500 KW
60HZ/40C COOLING
TADI6-1GE SERIES VOLVO
TIER II

APPLICATE STANDARD	REVIEW
NORM	

FD-G1-01-02 REV.02

COPY CONTROLLED

COPY NOT CONTROLLED

OBSOLETE DATE

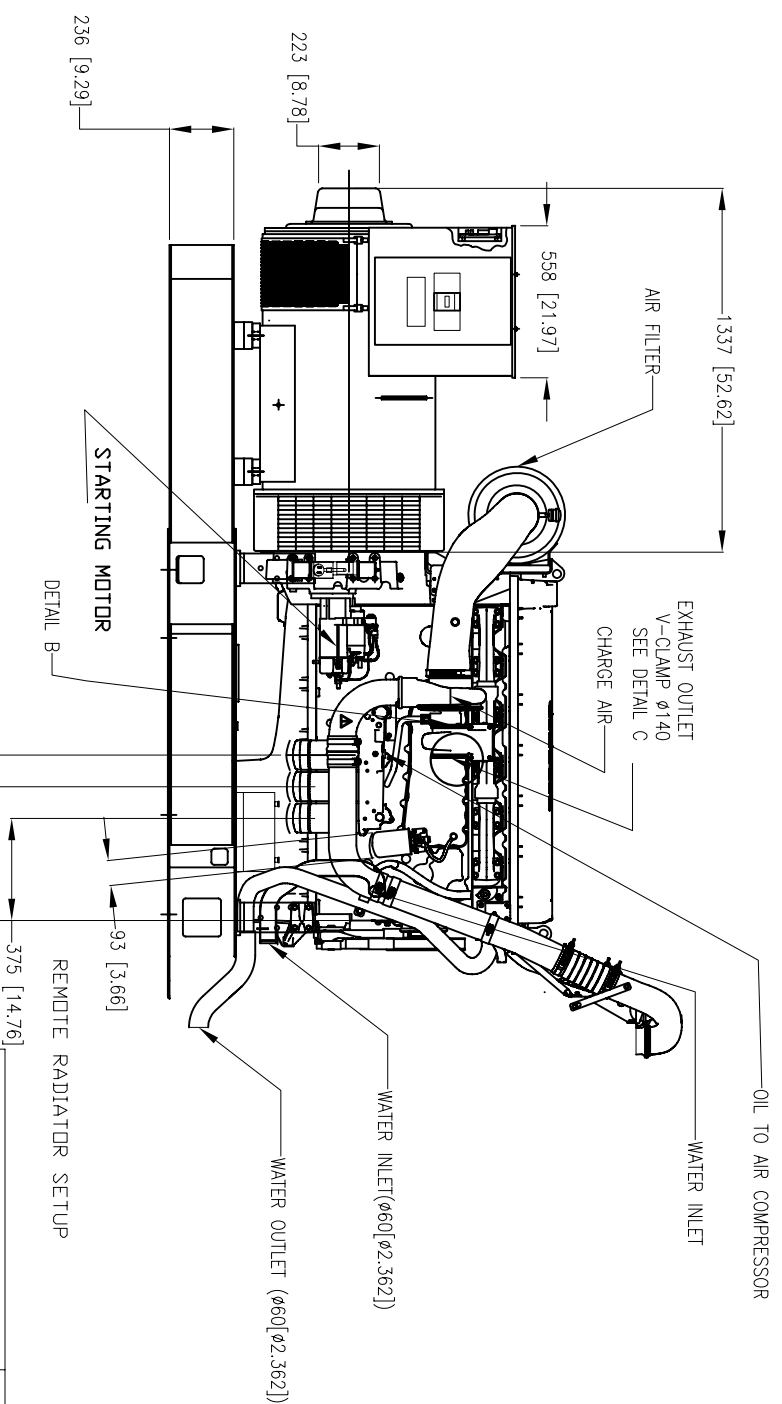
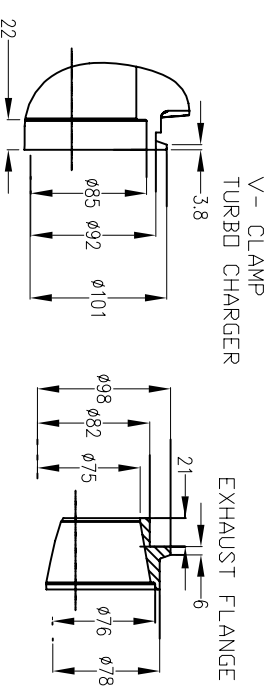
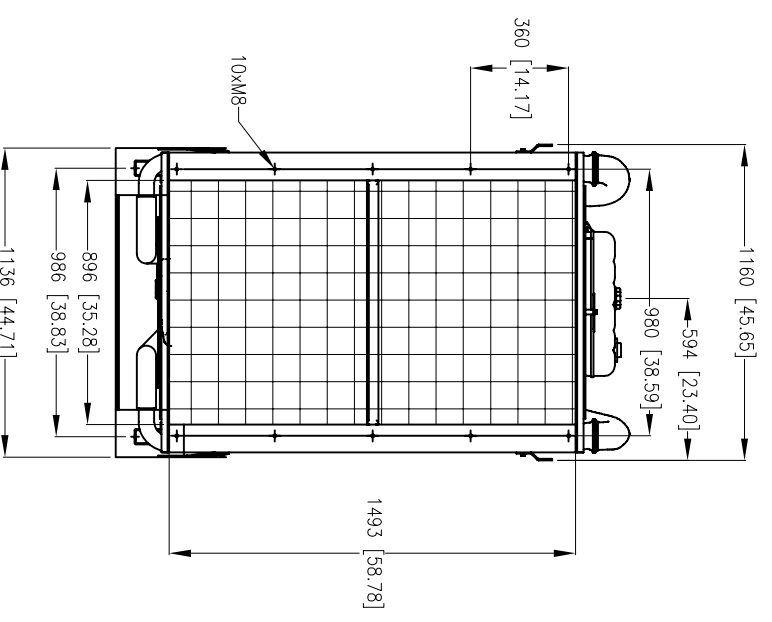
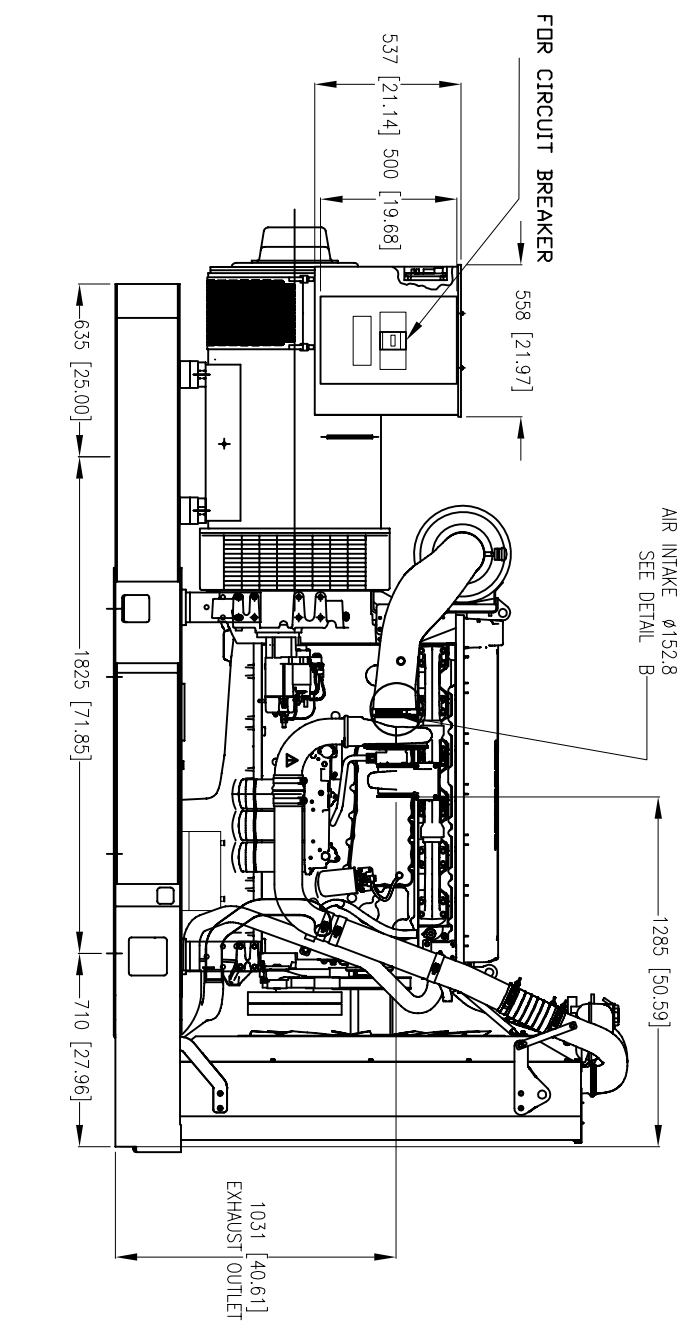
DESCRIPTION	REVIEW	NUMBER OF CHANGE	DATE	REVIEW
LIST OF REVISIONS				

MATERIAL	PART NUMBER	WEIGHT (KG)	FINISH	NOT FINISH
NA	NA	NA	NA	NA

MANUFACTURING NOT TOLERANCE	MANUFACTURING TOLERANCE	ANGULAR
RANGE	DECIMAL	NO. DIM
0 mm - 200 mm	± 0.1 mm	± 1
200 mm - 1200 mm	± 0.2 mm	± 1
1200 mm - 10000 mm	± 0.3 mm	± 1

FRACCIÓN	APPROVE WITH GAUGE
3	± 0.007

CLIENTS	MAQUINARIA IGSA S.A. DE C.V.
TITLE	GENERAL ADJUSTMENT GENSET 500 KW WITH CHASSIS
DATE	16-06-07
DESIGN	ALCS
REVIEW	RIS
APPROVED	HLS
SCALE	1:1
DRAWING NUMBER	GS.VD20500S
SHEET	1 of 3



APPLICATE STANDARD	REVIEW
NORM	

NOTE: DIMENSIONS IN [] ARE INCH

FD-G1-01-02 REV.02

COPY CONTROLLED

COPY NOT CONTROLLED

OBSOLETE DATE

DESCRIPTION	REVIEW	NUMBER OF CHANGE	DATE	REVIEW
LIST OF REVISIONS				

MATERIAL	PART NUMBER	WEIGHT (kg)	FINISH	NOT FINISH	OTHER
NA	NA	NA	NA	NA	OTHER
MANUFACTURING TOLERANCE					
RANGE	TOLERANCES	DECIMAL	LINEAR	DIAMETER	ANGULAR
0 mm - 200 mm	± 0.1 mm	0	± 0.12	± 0.08	No. DIM
200 mm - 1200 mm	± 0.2 mm	1	± 0.15	± 0.10	DIM
1200 mm - 10000 mm	± 0.3 mm	2	± 0.20	± 0.15	
	± 0.5 mm	3	± 0.25	± 0.20	
	± 1.0 mm	4	± 0.30	± 0.25	
	± 1.5 mm	5	± 0.35	± 0.30	
	± 2.0 mm	6	± 0.40	± 0.35	
	± 2.5 mm	7	± 0.45	± 0.40	
	± 3.0 mm	8	± 0.50	± 0.45	
	± 3.5 mm	9	± 0.55	± 0.50	
	± 4.0 mm	10	± 0.60	± 0.55	
	± 4.5 mm	11	± 0.65	± 0.60	
	± 5.0 mm	12	± 0.70	± 0.65	
	± 5.5 mm	13	± 0.75	± 0.70	
	± 6.0 mm	14	± 0.80	± 0.75	
	± 6.5 mm	15	± 0.85	± 0.80	
	± 7.0 mm	16	± 0.90	± 0.85	
	± 7.5 mm	17	± 0.95	± 0.90	
	± 8.0 mm	18	± 1.00	± 0.95	
	± 8.5 mm	19	± 1.05	± 1.00	
	± 9.0 mm	20	± 1.10	± 1.05	
	± 9.5 mm	21	± 1.15	± 1.10	
	± 10.0 mm	22	± 1.20	± 1.15	
	± 10.5 mm	23	± 1.25	± 1.20	
	± 11.0 mm	24	± 1.30	± 1.25	
	± 11.5 mm	25	± 1.35	± 1.30	
	± 12.0 mm	26	± 1.40	± 1.35	
	± 12.5 mm	27	± 1.45	± 1.40	
	± 13.0 mm	28	± 1.50	± 1.45	
	± 13.5 mm	29	± 1.55	± 1.50	
	± 14.0 mm	30	± 1.60	± 1.55	
	± 14.5 mm	31	± 1.65	± 1.60	
	± 15.0 mm	32	± 1.70	± 1.65	
	± 15.5 mm	33	± 1.75	± 1.70	
	± 16.0 mm	34	± 1.80	± 1.75	
	± 16.5 mm	35	± 1.85	± 1.80	
	± 17.0 mm	36	± 1.90	± 1.85	
	± 17.5 mm	37	± 1.95	± 1.90	
	± 18.0 mm	38	± 2.00	± 1.95	
	± 18.5 mm	39	± 2.05	± 2.00	
	± 19.0 mm	40	± 2.10	± 2.05	
	± 19.5 mm	41	± 2.15	± 2.10	
	± 20.0 mm	42	± 2.20	± 2.15	
	± 20.5 mm	43	± 2.25	± 2.20	
	± 21.0 mm	44	± 2.30	± 2.25	
	± 21.5 mm	45	± 2.35	± 2.30	
	± 22.0 mm	46	± 2.40	± 2.35	
	± 22.5 mm	47	± 2.45	± 2.40	
	± 23.0 mm	48	± 2.50	± 2.45	
	± 23.5 mm	49	± 2.55	± 2.50	
	± 24.0 mm	50	± 2.60	± 2.55	
	± 24.5 mm	51	± 2.65	± 2.60	
	± 25.0 mm	52	± 2.70	± 2.65	
	± 25.5 mm	53	± 2.75	± 2.70	
	± 26.0 mm	54	± 2.80	± 2.75	
	± 26.5 mm	55	± 2.85	± 2.80	
	± 27.0 mm	56	± 2.90	± 2.85	
	± 27.5 mm	57	± 2.95	± 2.90	
	± 28.0 mm	58	± 3.00	± 2.95	
	± 28.5 mm	59	± 3.05	± 3.00	
	± 29.0 mm	60	± 3.10	± 3.05	
	± 29.5 mm	61	± 3.15	± 3.10	
	± 30.0 mm	62	± 3.20	± 3.15	
	± 30.5 mm	63	± 3.25	± 3.20	
	± 31.0 mm	64	± 3.30	± 3.25	
	± 31.5 mm	65	± 3.35	± 3.30	
	± 32.0 mm	66	± 3.40	± 3.35	
	± 32.5 mm	67	± 3.45	± 3.40	
	± 33.0 mm	68	± 3.50	± 3.45	
	± 33.5 mm	69	± 3.55	± 3.50	
	± 34.0 mm	70	± 3.60	± 3.55	
	± 34.5 mm	71	± 3.65	± 3.60	
	± 35.0 mm	72	± 3.70	± 3.65	
	± 35.5 mm	73	± 3.75	± 3.70	
	± 36.0 mm	74	± 3.80	± 3.75	
	± 36.5 mm	75	± 3.85	± 3.80	
	± 37.0 mm	76	± 3.90	± 3.85	
	± 37.5 mm	77	± 3.95	± 3.90	
	± 38.0 mm	78	± 4.00	± 3.95	
	± 38.5 mm	79	± 4.05	± 4.00	
	± 39.0 mm	80	± 4.10	± 4.05	
	± 39.5 mm	81	± 4.15	± 4.10	
	± 40.0 mm	82	± 4.20	± 4.15	
	± 40.5 mm	83	± 4.25	± 4.20	
	± 41.0 mm	84	± 4.30	± 4.25	
	± 41.5 mm	85	± 4.35	± 4.30	
	± 42.0 mm	86	± 4.40	± 4.35	
	± 42.5 mm	87	± 4.45	± 4.40	
	± 43.0 mm	88	± 4.50	± 4.45	
	± 43.5 mm	89	± 4.55	± 4.50	
	± 44.0 mm	90	± 4.60	± 4.55	
	± 44.5 mm	91	± 4.65	± 4.60	
	± 45.0 mm	92	± 4.70	± 4.65	
	± 45.5 mm	93	± 4.75	± 4.70	
	± 46.0 mm	94	± 4.80	± 4.75	
	± 46.5 mm	95	± 4.85	± 4.80	
	± 47.0 mm	96	± 4.90	± 4.85	
	± 47.5 mm	97	± 4.95	± 4.90	
	± 48.0 mm	98	± 5.00	± 4.95	
	± 48.5 mm	99	± 5.05	± 5.00	
	± 49.0 mm	100	± 5.10	± 5.05	
	± 49.5 mm	101	± 5.15	± 5.10	
	± 50.0 mm	102	± 5.20	± 5.15	
	± 50.5 mm	103	± 5.25	± 5.20	
	± 51.0 mm	104	± 5.30	± 5.25	
	± 51.5 mm	105	± 5.35	± 5.30	
	± 52.0 mm	106	± 5.40	± 5.35	
	± 52.5 mm	107	± 5.45	± 5.40	
	± 53.0 mm	108	± 5.50	± 5.45	
	± 53.5 mm	109	± 5.55	± 5.50	
	± 54.0 mm	110	± 5.60	± 5.55	
	± 54.5 mm	111	± 5.65	± 5.60	
	± 55.0 mm	112	± 5.70	± 5.65	
	± 55.5 mm	113	± 5.75	± 5.70	
	± 56.0 mm	114	± 5.80	± 5.75	
	± 56.5 mm	115	± 5.85	± 5.80	
	± 57.0 mm	116	± 5.90	± 5.85	
	± 57.5 mm	117	± 5.95	± 5.90	
	± 58.0 mm	118	± 6.00	± 5.95	
	± 58.5 mm	119	± 6.05	± 6.00	
	± 59.0 mm	120	± 6.10	± 6.05	
	± 59.5 mm	121	± 6.15	± 6.10	
	± 60.0 mm	122	± 6.20	± 6.15	
	± 60.5 mm	123	± 6.25	± 6.20	
	± 61.0 mm	124	± 6.30	± 6.25	
	± 61.5 mm	125	± 6.35	± 6.30	
	± 62.0 mm	126	± 6.40	± 6.35	
	± 62.5 mm	127	± 6.45	± 6.40	
	± 63.0 mm	128	± 6.50	± 6.45	
	± 63.5 mm	129	± 6.55	± 6.50	
	± 64.0 mm	130	± 6.60	± 6.55	
	± 64.5 mm	131	± 6.65	± 6.60	
	± 65.0 mm	132	± 6.70	± 6.65	
	± 65.5 mm	133	± 6.75	± 6.70	
	± 66.0 mm	134	± 6.80	± 6.75	
	± 66.5 mm	135	± 6.85	± 6.80	
	± 67.0 mm	136	± 6.90	± 6.85	
	± 67.5 mm	137	± 6.95	± 6.90	
	± 68.0 mm	138	± 7.00	± 6.95	
	± 68.5 mm	139	± 7.05	± 7.00	
	± 69.0 mm	140	± 7.10	± 7.05	
	± 69.5 mm	141	± 7.15	± 7.10	
	± 70.0 mm	142	± 7.20	± 7.15	
	± 70.5 mm	143	± 7.25	± 7.20	
	± 71.0 mm	144	± 7.30	± 7.25	
	± 71.5 mm	145	± 7.35	± 7.30	
	± 72.0 mm	146	± 7.40	± 7.35	
	± 72.5 mm	147	± 7.45	± 7.40	
	± 73.0 mm	148	± 7.50	± 7.45	
	± 73.5 mm	149	± 7.55	± 7.50	
	± 74.0 mm	150	± 7.60	± 7.55	
	± 74.5 mm	151	± 7.65	± 7.60	
	± 75.0 mm	152	± 7.70	± 7.65	
	± 75.5 mm	153	± 7.75	± 7.70	
	± 76.0 mm	154	± 7.80	± 7.75	
	± 76.5 mm	155	± 7.85	± 7.80	
	± 77.0 mm	156	± 7.90	± 7.85	
	± 77.5 mm	157	± 7.95	± 7.90	
	± 78.0 mm	158	± 8.00	± 7.95	
	± 78.5 mm	159	± 8.05	± 8.00	
	± 79.0 mm	160	± 8.10	± 8.05	
	± 79.5 mm	161	± 8.15	± 8.10	
	± 80.0 mm	162	± 8.20	± 8.15	
	± 80.5 mm	163	± 8.25	± 8.20	
	± 81.0 mm	164	± 8.30	± 8.25	
	± 81.5 mm	165	± 8.35	± 8.30	
	± 82.0 mm	166	± 8.40	± 8.35	
	± 82.5 mm	167	± 8.45	± 8.40	
	± 83.0 mm	168	± 8.50	± 8.45	
	± 83.5 mm	169	± 8.55	± 8.50	
	± 84.0 mm	170	± 8.60	± 8.55	
	± 84.5 mm	171	± 8.65	± 8.60	</

